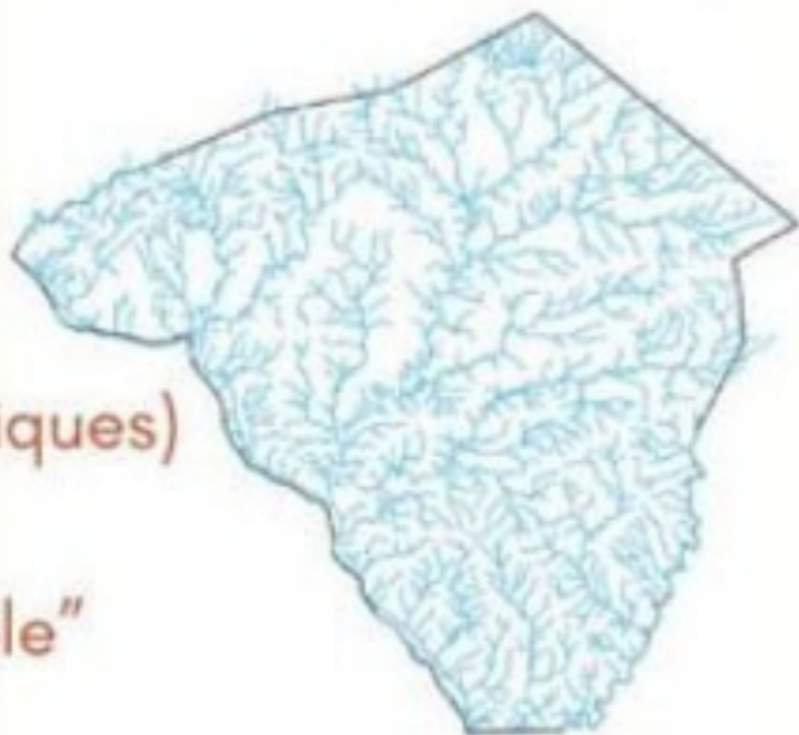




CELESTINE VAILLEN CONVERSATIONS



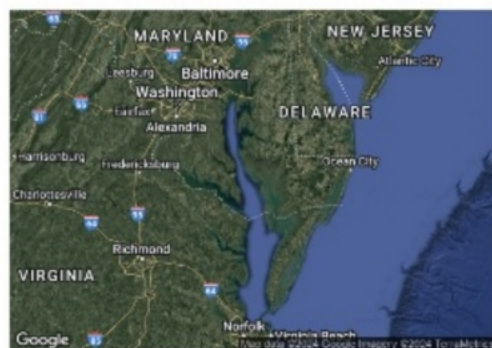
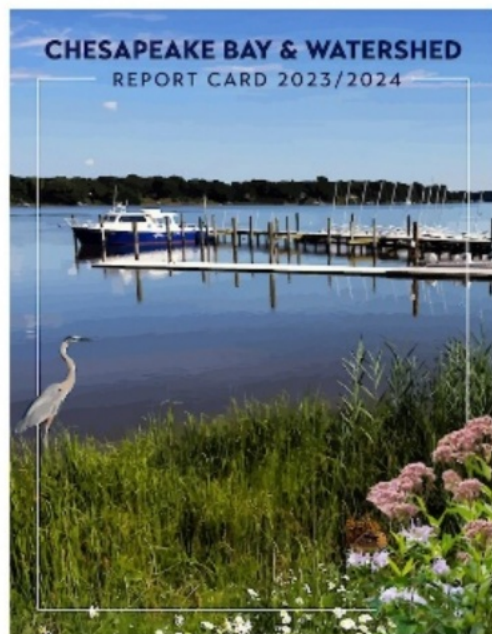
Native American Origin Names for Lancaster County's Streams



- **Chiquesalunga** - "place of the craw-fish" (Chiques)
- **Cocalico** - "snake dens"
- **Conestoga** - "at the place of the immersed pole"
- **Conewago** - "at the rapids"
- **Conewingo** - "at the rapids"
- **Conoy** - named for an Algonkian tribe
- **Octoraro** - "it is covered with water"
- **Pequea** - "dust" or "ashes" (the name of a clan of Shawnees)
- **Susquehanna** - "the long reach river," "muddy river," or "winding river"







2023/2024 Chesapeake Bay & Watershed Report Card

This report card provides a transparent, timely, and geographically detailed assessment of Chesapeake Bay and its Watershed. Since 2016, UMCES has engaged stakeholders throughout the watershed to transform the report card into an evaluation of the Chesapeake Watershed health. Watershed health includes traditional ecological indicators, but also economic and societal indicators. This is the fifth year the watershed has been scored, and while no new indicators were included this year there were multiple updates to existing indicators. Linkages and relationships between the ecological, economic, and societal indicators will be evaluated in future report cards.

Overall, the Chesapeake Watershed scored 52%, a C. There were four ecological indicators, four economic indicators, and four societal indicators.

Overall, Chesapeake Bay scored 55%, a C+, in 2023, showing a significantly improving trend. This is the highest overall grade for the bay since 2002.

Keywords: Chesapeake Bay, Chesapeake Bay Watershed, Bay Health, Watershed Health, Aquatic, Terrestrial, Societal, Report Card, environment, ecosystem, walkability, heat vulnerability index, social index, protected lands, stewardship, benthic community, water quality, fish community, economics, median household income, housing affordability, income inequality, jobs growth, ecological, societal, economic, environmental justice, plastics, debris, land use, listening session

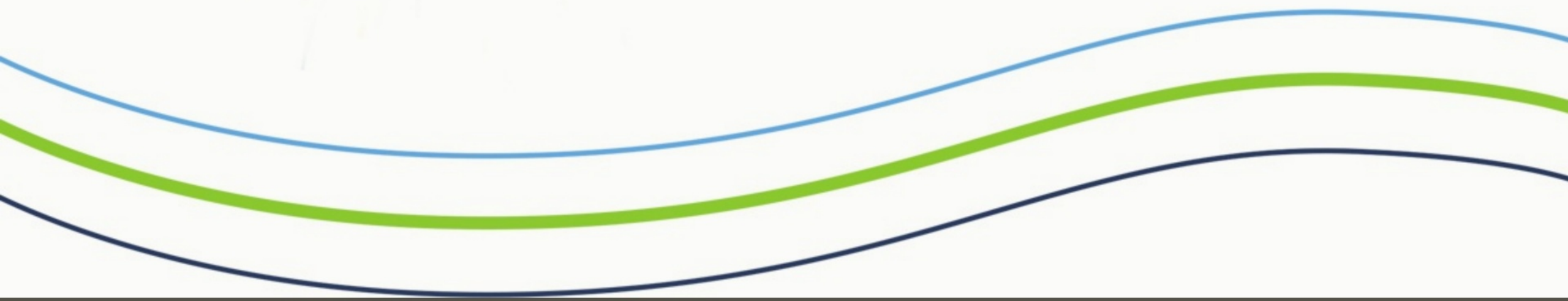
IAN Author(s)

Vanessa Vargas-Nguyen, Joe Edgerton, Roshni Nair, Sidney Anderson, Lili Badri, Veronica Lucchese, Anikka Fife, Heath Kelsey, Bill Dennison



Collaborative Network

7/11/14







Funding

9/20/2014





Tools & Data

9/11/2019





CAP Coordinator





Well executed strategy to delist streams





Strong narrative of local success

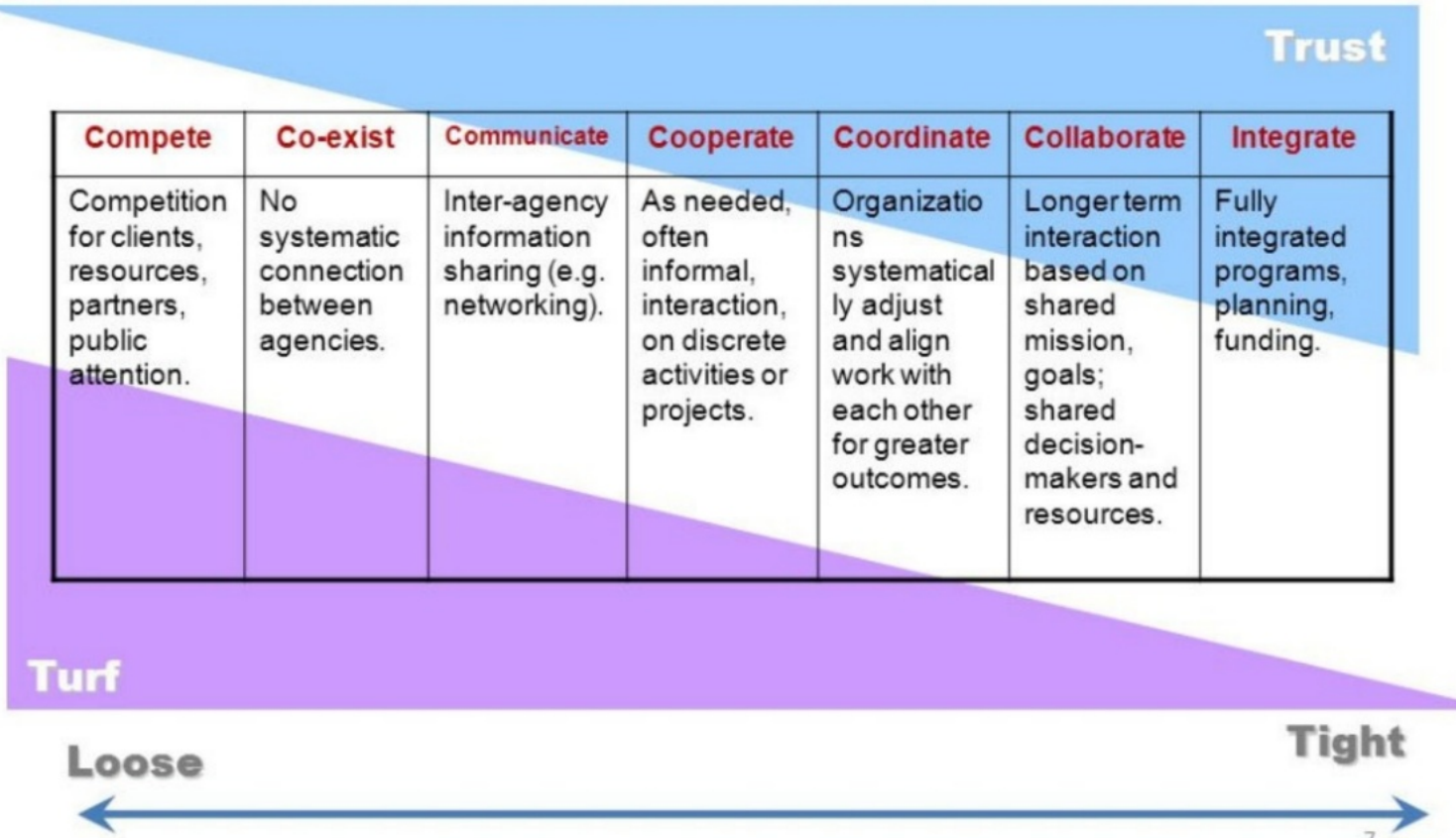




Collective impact



The Collaboration Continuum



Green:

turf you gave
up

Blue:

place where
trust went up



Collaborative Network Participant Experience

Instructions: Your perspective on the Lancaster Clean Water Partners as a network matters! So we can understand more about your experience in the network, please complete the following brief survey. It should take LESS THAN 10 minutes!

Data from all network participants will only be shared in aggregate. Your individual responses will remain confidential. Thank you for your input!

Survey tool adapted from the Converge Network. This work is licensed under the Creative Commons Attribution-Share Alike 4.0 International License

kenn.bennett4@gmail.com [Switch account](#)



Not shared

* Indicates required question

The purpose of the Lancaster Clean Water Partners as a collaborative network is *

Questions

Responses

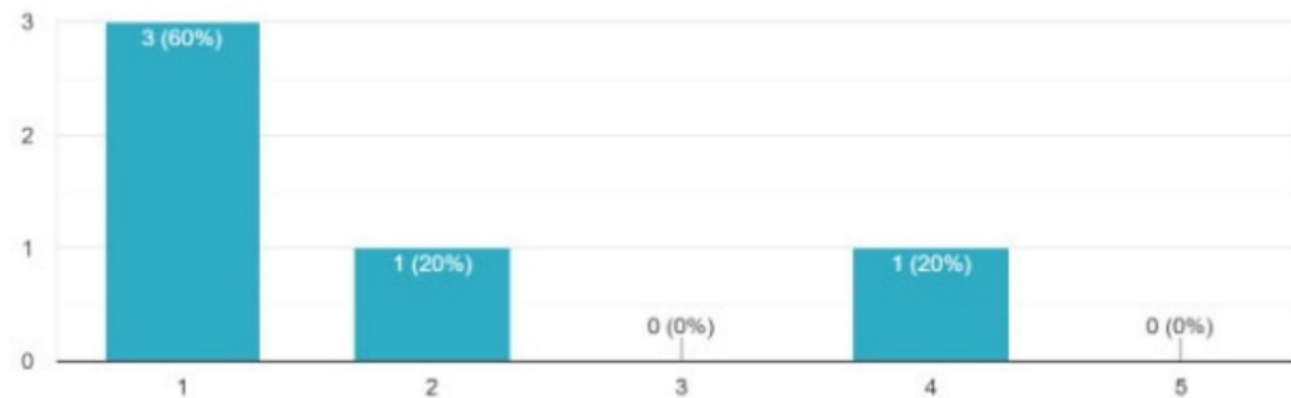
5

Settings

Through the network, my organization has developed at least one new collaborative project with another organization in Lancaster.

 Copy

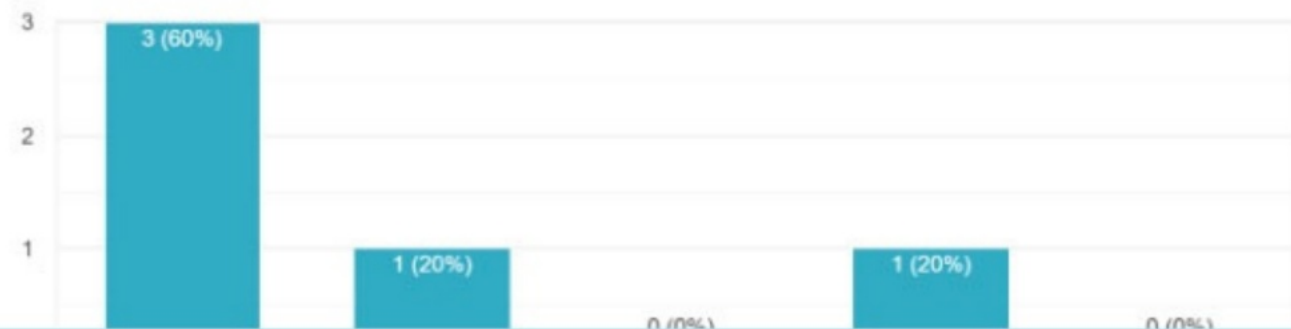
5 responses



My organization can have a greater impact because of our relationships with other network participant organizations.

 Copy

5 responses



Lancaster Clean Water Partners Map

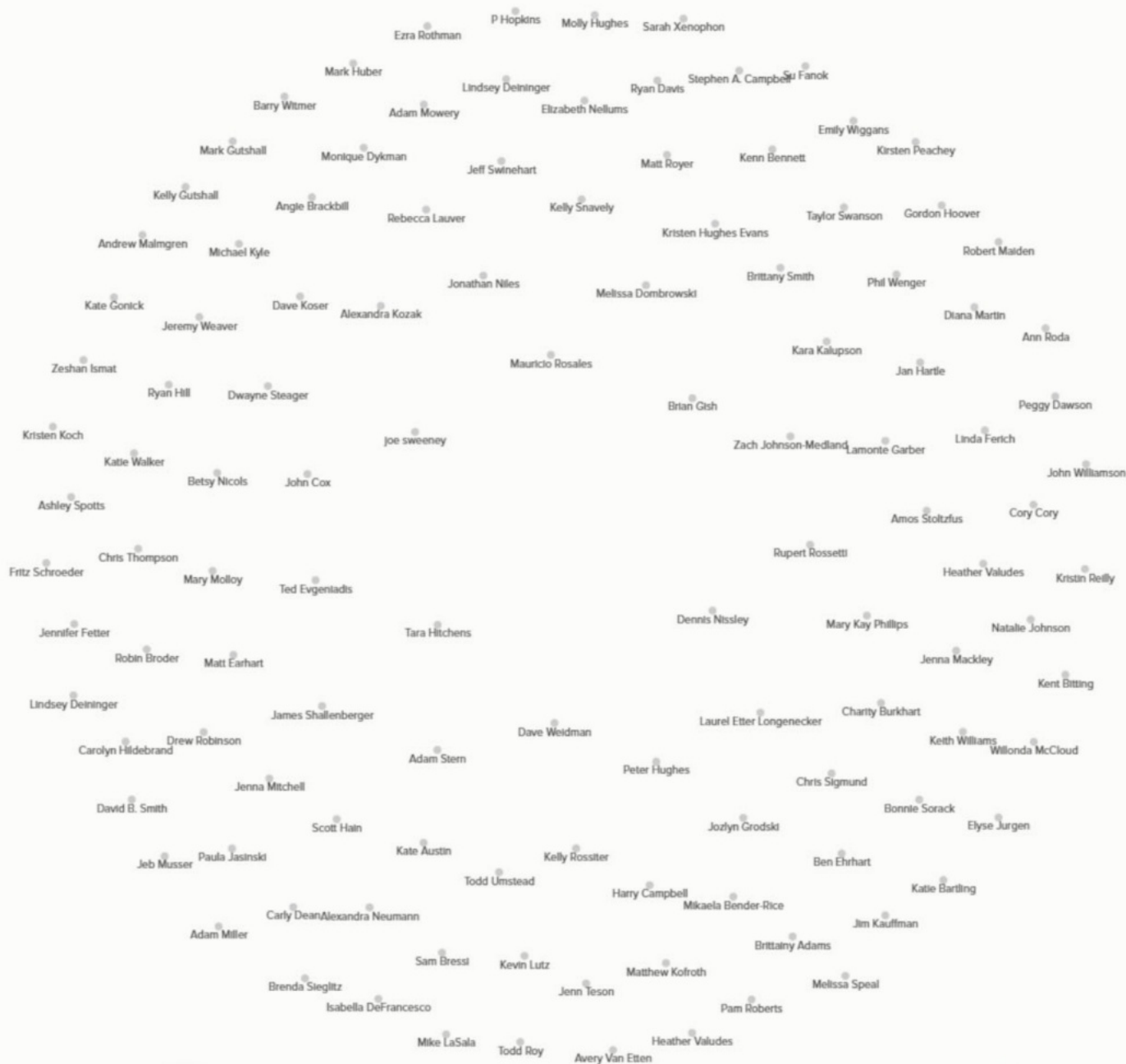


Lancaster

CLEAN WATER PARTNERS

#lancaster-clean-water-partners | permalink

Search





Get your sumApp link

Your link to sumApp is unique to you. If you're already in this sumApp project, enter your email below so we can send it to you.

Email

agibson@lancastercleanwaterpartners.com

Send me my link

If you don't see the email containing your link, search your inbox for something from 'noreply@sum-app.net'

Your link for Chesapeake Steward Map

External

Internal



noreply@sum-app.net

120 PM 11 minutes ago

Hello Allyson Gibson. Here is your unique link to the Chesapeake Steward Map sumApp instance: <https://sum-app.net/members/5106A6296eX02b-and/va2q> If you have questions, please contact Sonia Keiner

Reply

Forward

Chesapeake Steward Map

BIO SURVEY CONNECTIONS MAP

MY PREFERENCES

You've shared information about 16 connections with us so far

Hello, Allyson! Welcome to your personal dashboard! By joining the Chesapeake Steward Map you are helping to visualize our stewardship community across the region!

The purpose of the map is to increase impact, connections and collaborative partnerships among people doing stewardship work in the Chesapeake Bay watershed by highlighting opportunities to facilitate strategic connections to people, knowledge and resources.

Instructions:

On your personal dashboard you have four tabs: Bio, Survey, Connections and Map. You are currently on the Bio page. Start by uploading a photo of yourself below to help others recognize you and write a brief sentence about yourself. Your personal information (picture, optional email address, responses to the Survey questions) will be viewable to others who join the map.

When you proceed to the Survey tab, you will find a questionnaire that asks about you and your work. On the Connections tab you can click on the people you know and share your strength of connection to them. Your answers in the Survey and the Connections tabs will populate the map, which can be viewed on the Map tab.

Bookmark your dashboard and come back anytime to update your survey and connections to others in the watershed, or to view the map.

View a 3-minute tutorial here if you need help joining the map.

This map is being supported by the Chesapeake Bay Trust, Chesapeake Bay Program, and the U.S. Environmental Protection Agency to advance stewardship outcomes of the 2014 Chesapeake Bay Watershed Agreement. For this project we are defining stewardship as actions that achieve healthy land, waters, and a vibrant Chesapeake Bay watershed.

Click here for the Chesapeake Steward Map FAQ

Thanks in advance for participating. If you have any questions, or if you need support, please contact Sonia Keiner at sonia@localconceptslc.com. Thank you!



Chesapeake Steward Map

BIO SURVEY CONNECTIONS MAP

MY PREFERENCES

Hello, Allyson! Welcome to your personal dashboard! By joining the Chesapeake Steward Map you are helping to visualize our stewardship community across the region!

BACK FRESH

You've shared information about 16 connections with us so far

Please click on the tiles below to tell us who you know & how well you know them

SORT BY

RECENT

CONNECTED

SEGMENT

NAME

FILTER BY SEGMENT

Search

Q



Allyson Gibson

Lady who loves Lancaster and collaborating for clean water



Peter Craggett

Do not available



Emily Heller

Do not available



Kim Thomas

Do not available



Amy Ward

On the Stewardship Program Coordinator for Loudoun Middle and run local and chemical monitoring programs and a Salt Marsh program

Your connection to this person:

How you are connected to this person (select 1):

- ☐ Light Connection (I have met this person, but do not communicate with them or have a personal or professional relationship with them. This may also include former colleagues with whom you have a closer personal connection but are no longer in regular contact with.)
- ☐ Moderate Connection (I have a personal or professional relationship with this person & communicate with them with some regularity.)
- ☐ Strong Connection (I work closely with, or collaborate with this person to advance shared goals.)

0/16

0/16



The Ask:

**Fill out your connections for
every person by 11/19**

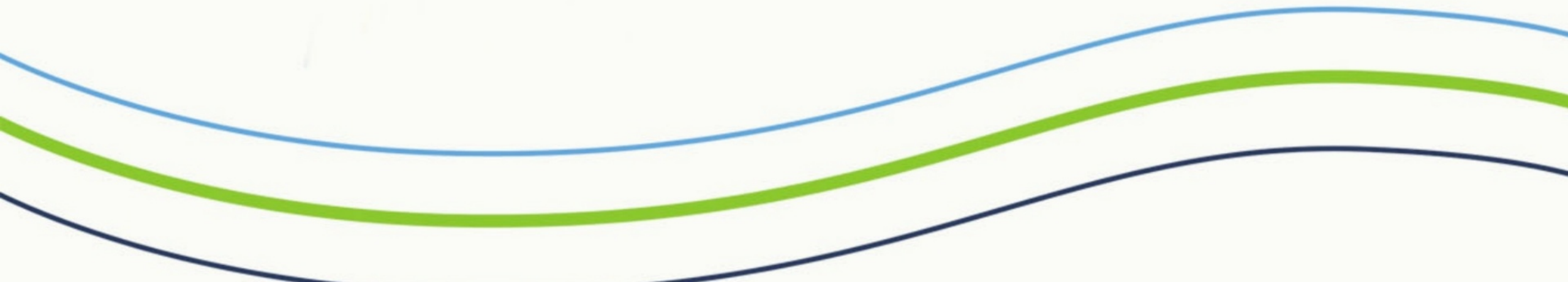


Small Group Questions

1. What do you want the network to provide?
2. What survey questions should we use so we have the right user groups and views in 2025?
3. What are you willing to contribute?
4. What will you need to keep connected?

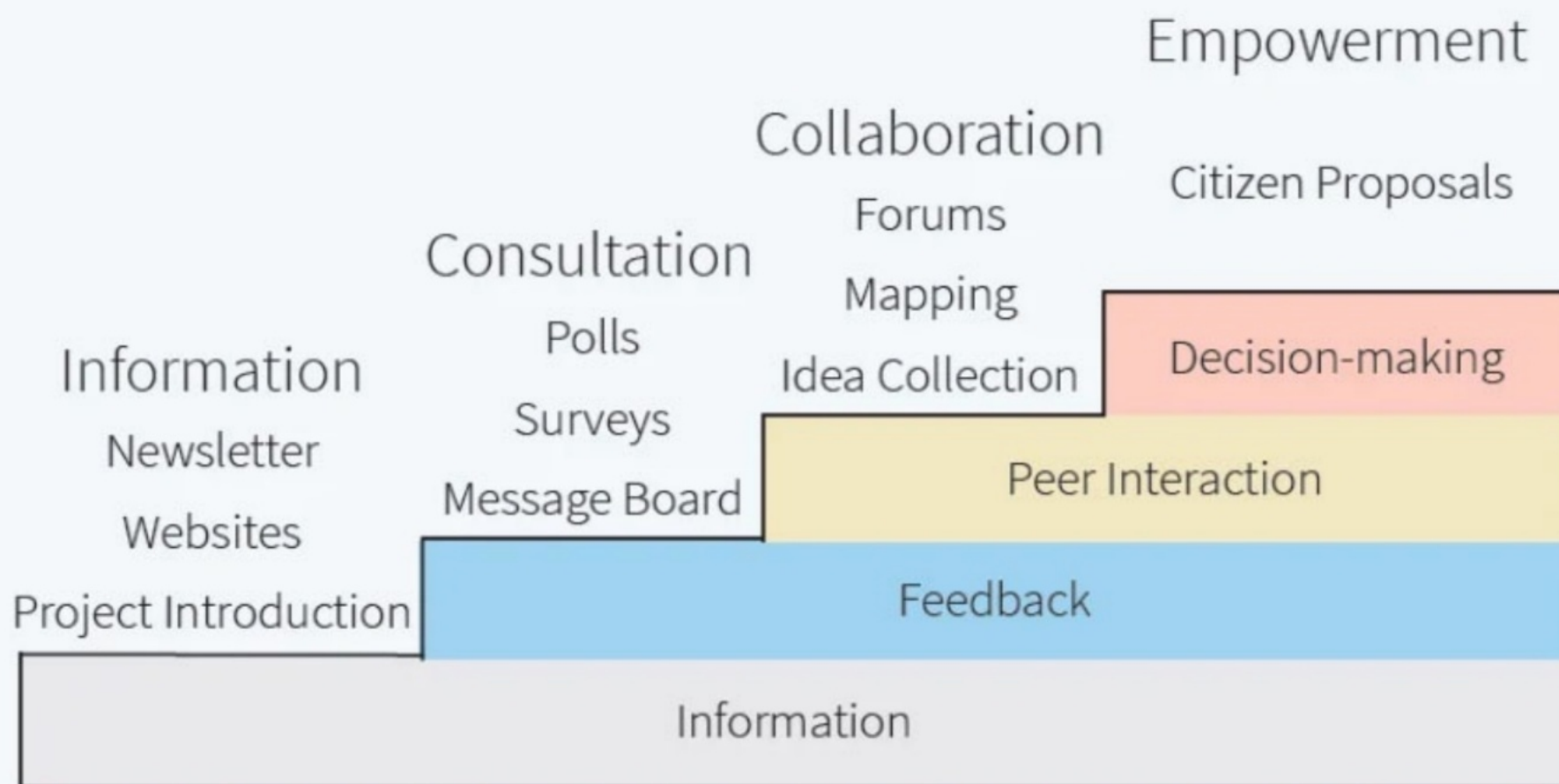


Why a Network is Important





Lancaster
CLEAN WATER PARTNERS



Partner organizations can join an Action Team or be a Co-Lead



Stormwater: Twice a year, plus workgroups

Communications: 2nd Wednesday 10am Online

Water Quality Monitoring: Quarterly

Buffers: 4th Thursday of the month

ALSO - full Partners meetings 2x a year

Buffer Team

[Learn more](#)

Communications Team

[Learn more](#)

Stormwater Team

[Learn more](#)

Monitoring Team

[Learn more](#)



Water Quality Monitoring Action Team (WQMAT)

- 15 organizations active in the Water Quality Monitoring Team, which meets quarterly
- Primary goal is making sure that everyone is on the same page about who is monitoring where, and for what parameters. We try to identify and bring in resources to fill the gaps.
- There's been an increase in both volunteers participating in monitoring efforts in the County and in the number of instream continuous monitoring units (or sondes)
 - There are 29 active sondes in Lancaster County's waterways
 - Check out the data and maps at the Water Quality Monitoring Team's table to learn more!







FEATURE SPEAKER



**Danene Sorace,
Mayor of the
City of
Lancaster**



CITY OF
LANCASTER



Clean Water Partners Meeting 10.29.24

Mayor Danene Sorace



**CITY OF
LANCASTER**

CITYOFLANCASTERPA.GOV

Water & the City of Lancaster

Drinking Water Produced

21M

Avg. Gallons Per Day

Wastewater Treated

20M

Avg. Gallons Per Day

Stormwater Captured

65M

Gallons Annually

**through our stormwater program*





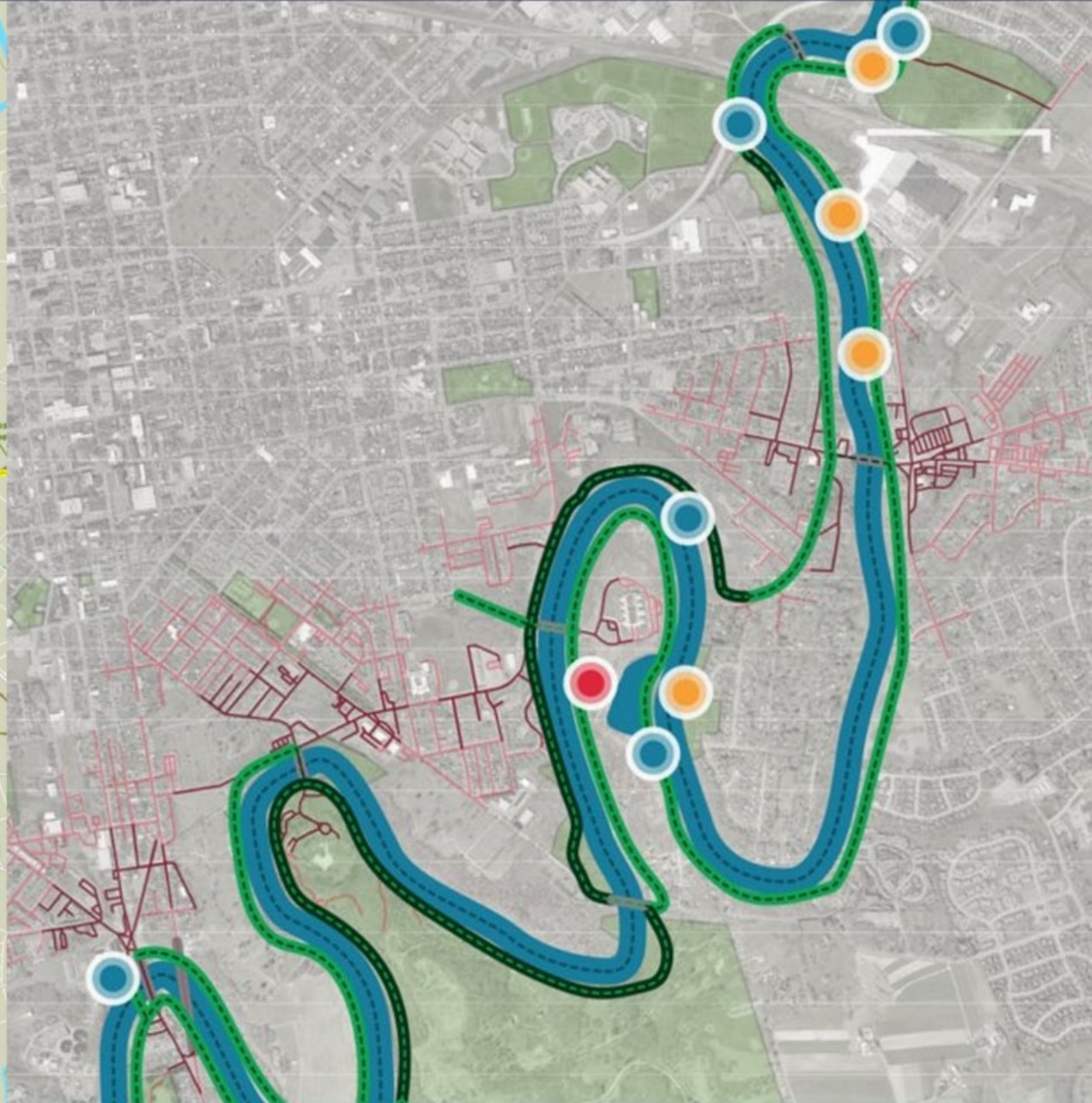
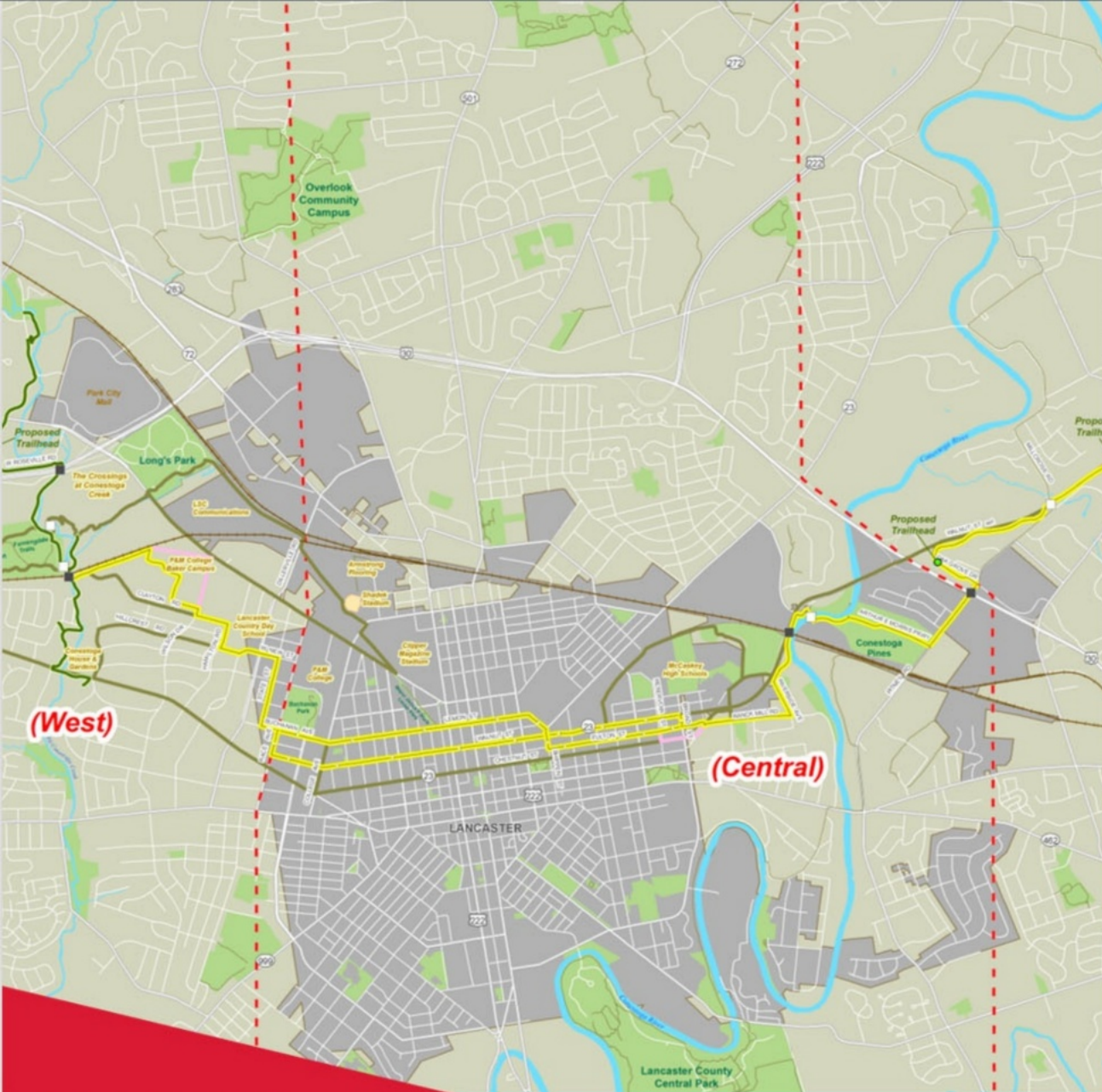
Pedestrian Bridge

Greenway Trail

Property Reuse Opportunity

Water St. Bike Trail

Property Reuse Opportunity



CITY OF
LANCASTER

CITYOFLANCASTERPA.GOV





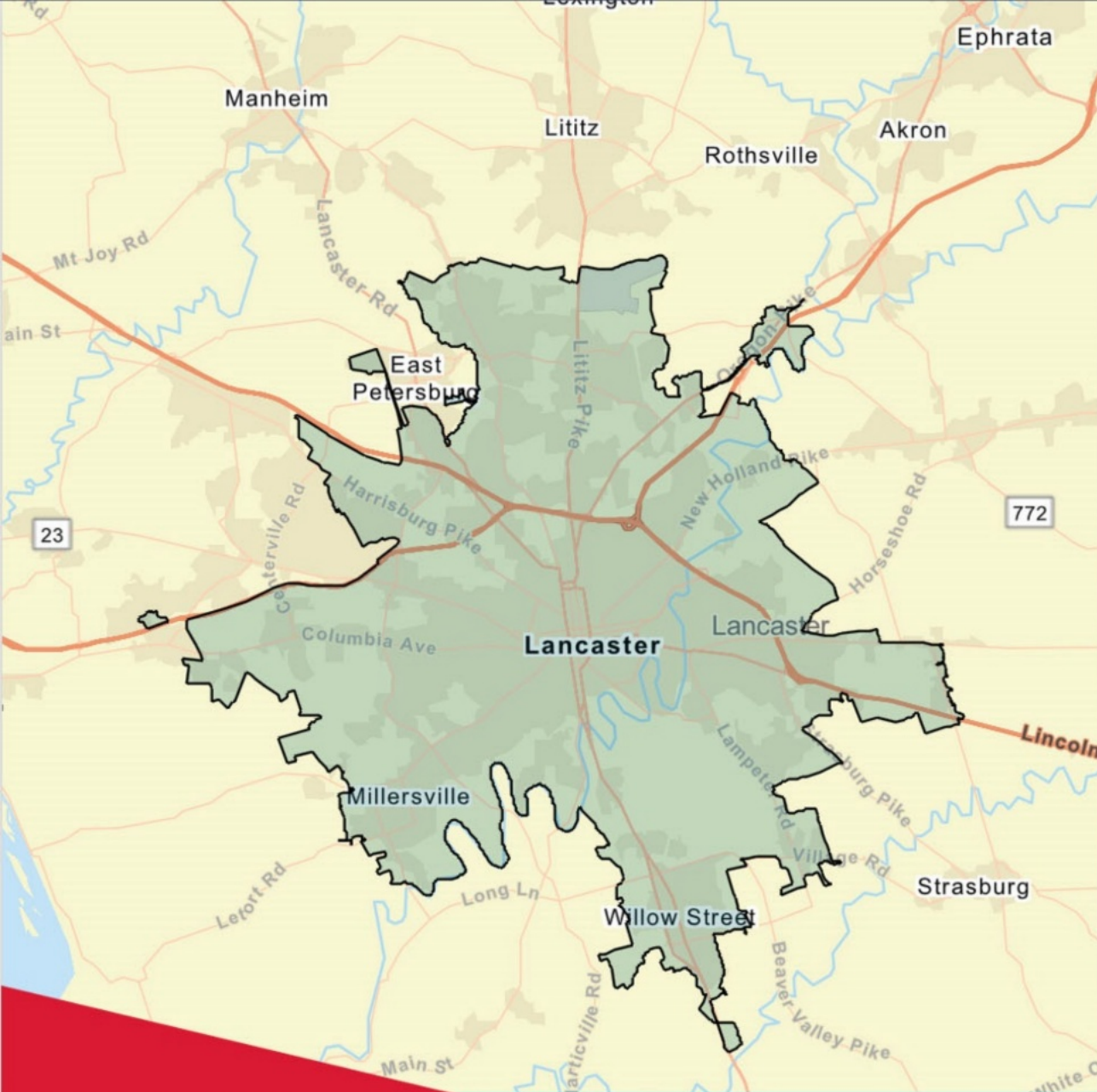
CITY OF
LANCASTER

CITYOFLANCASTERPA.GOV



CITY OF
LANCASTER

CITYOFLANCASTERPA.GOV



CITY OF
LANCASTER

CITYOFLANCASTERPA.GOV



CITY OF
LANCASTER

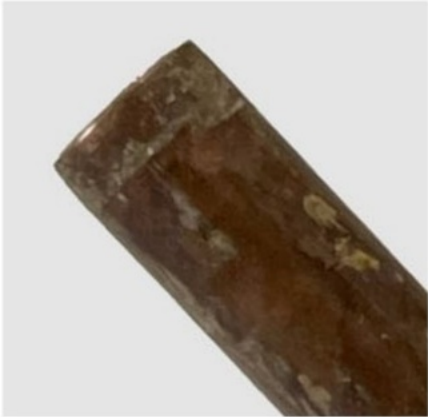
CITYOFLANCASTERPA.GOV



LEAD



GALVANIZED



COPPER



PLASTIC



Nearly half of Lancaster County residents have water with elevated 'forever chemicals'

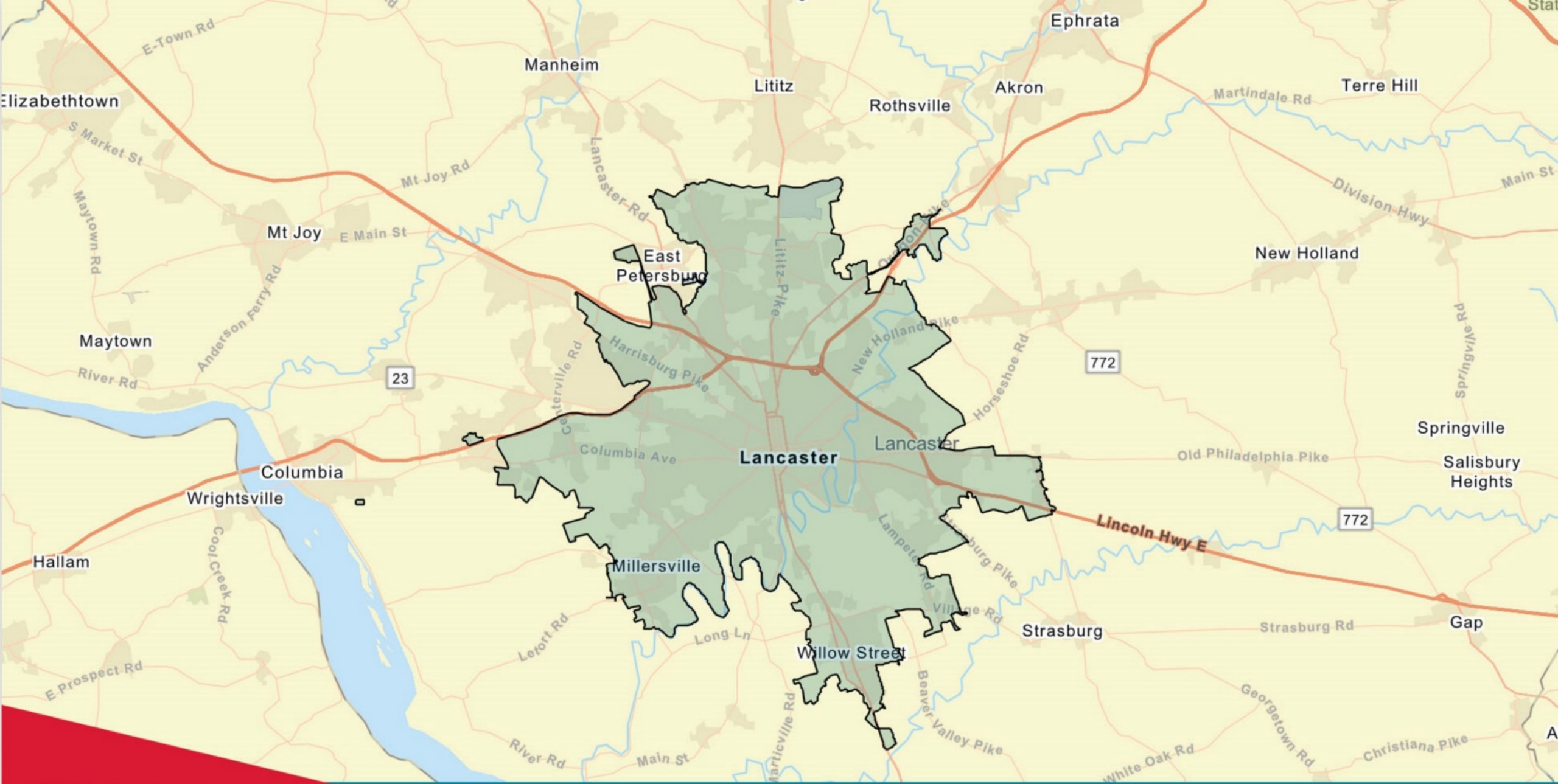
August 27, 2024





Water Affordability

	Current	Projected	Projected	TOTAL
	Sewer, Water, & Stormwater	Repair & Rehabilitation	New Requirements	Current + Projected
Annual Average Household Cost	\$1,052	\$700	\$440	\$2,192



CITY OF
LANCASTER

CITYOFLANCASTERPA.GOV



“ The common agenda must be created by and agreed to by the network defining ultimate results, data-driven and community-informed strategies that add up significantly to move the results...and clarity about what actions partners will need to take to achieve them.”

- *Backbone Leadership is Different*
by Dominique Samary, JD and Paul Scmitz
with the Collective Forum, August 2024





Stretch Break

“A network strives to achieve a common agenda that may feel just out of reach.”



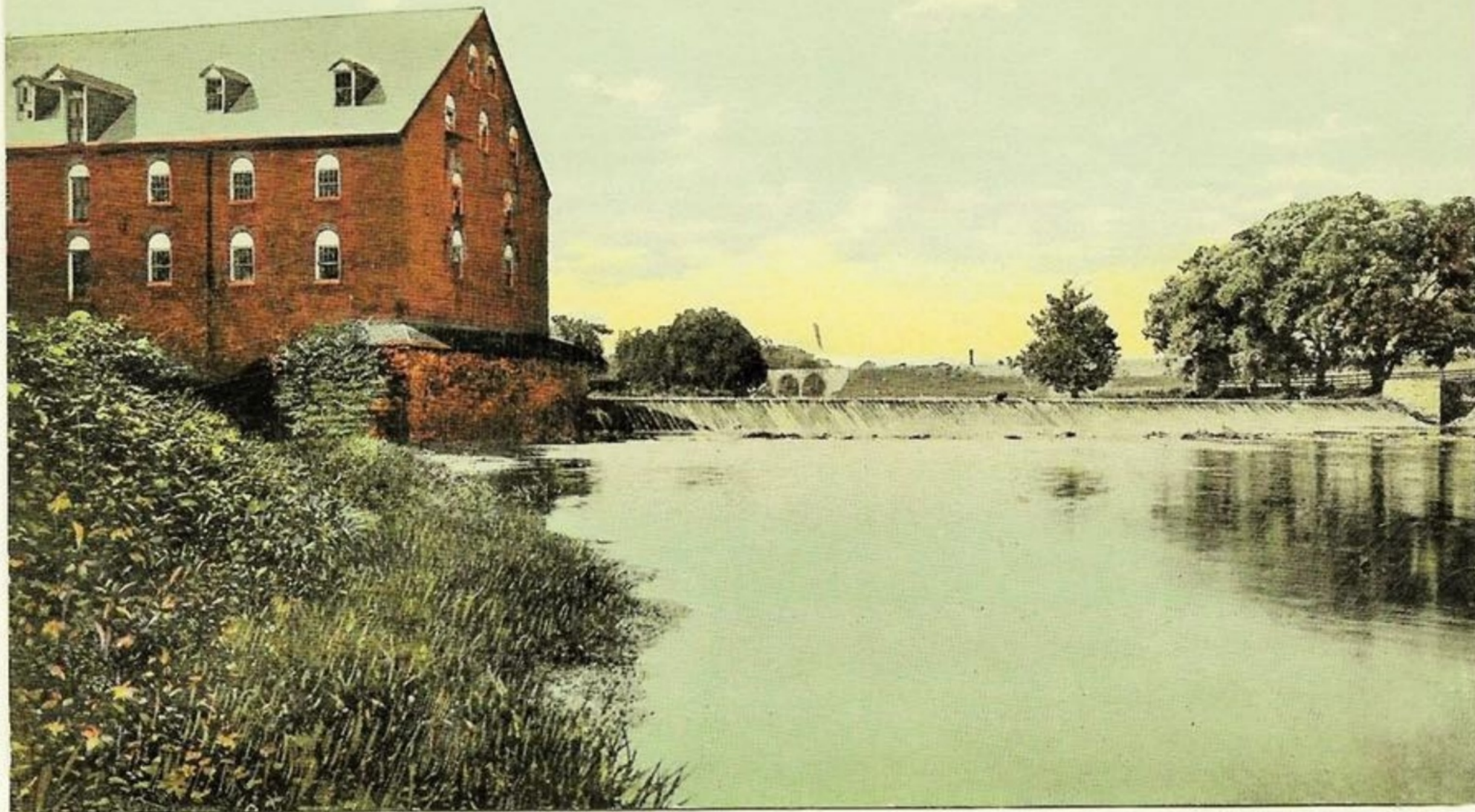








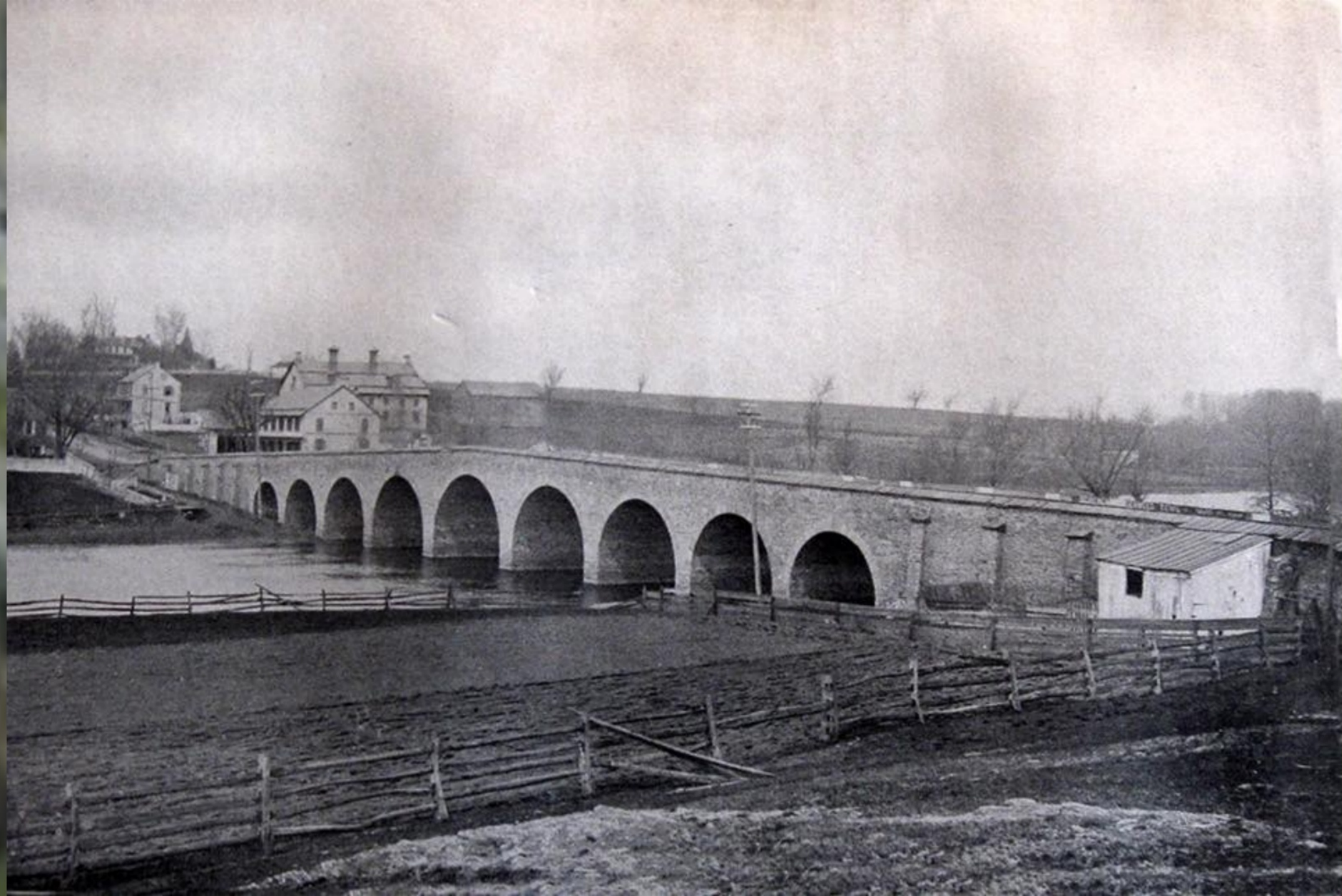
Rancks Mill and Dam or City Mill, Lancaster, Pa.





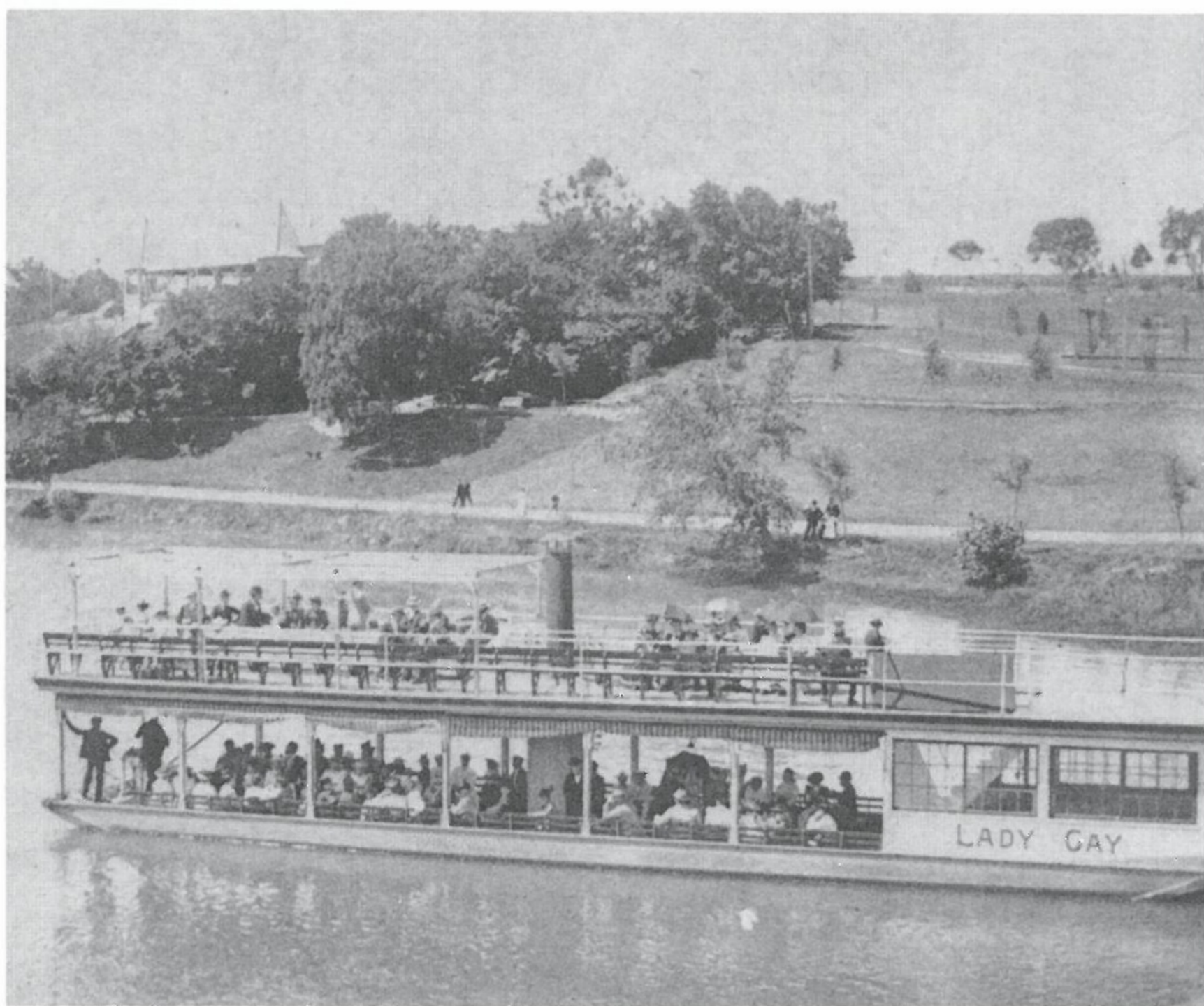






Lady Gay with the camera
near beautiful 9 arch stone bridge 1904





Named in honor of the civil engineer who built the Conestoga Navigation Canal, Edward Gay, the steamboat Lady Gay plied the Conestoga River giving pleasure to the young people of the late 19th and early 20th centuries.





Photo. Only, Copyright 1905 by the Rotograph Co.

View from Rocky Springs railway, Lancaster, Pa.





South Duke Street

Thaddeus Stevens School

Conestoga View

Sunnyside

First City Water Works and dam

Peoples Bathing Resort

Railroad

Ranck's Mill and dam

Conestoga Inn, dance hall, Boondocks, & boat houses

Tell's Hain

Rocky Springs

SR 23

Bridgeport

Steamship paddle-wheel boat rides to Peoples Bathing Resort and Rocky Springs

Abram Witmer's 9-arch stone bridge, built ca. 1790

Approximate location of Old Doctor's Ford (NE corner of Lancaster Township & SE corner of Manheim Township in 1729)



The Woodlands Mansion







Cocalico Creek Stream, Floodplain and Wetland Restoration Partnerships

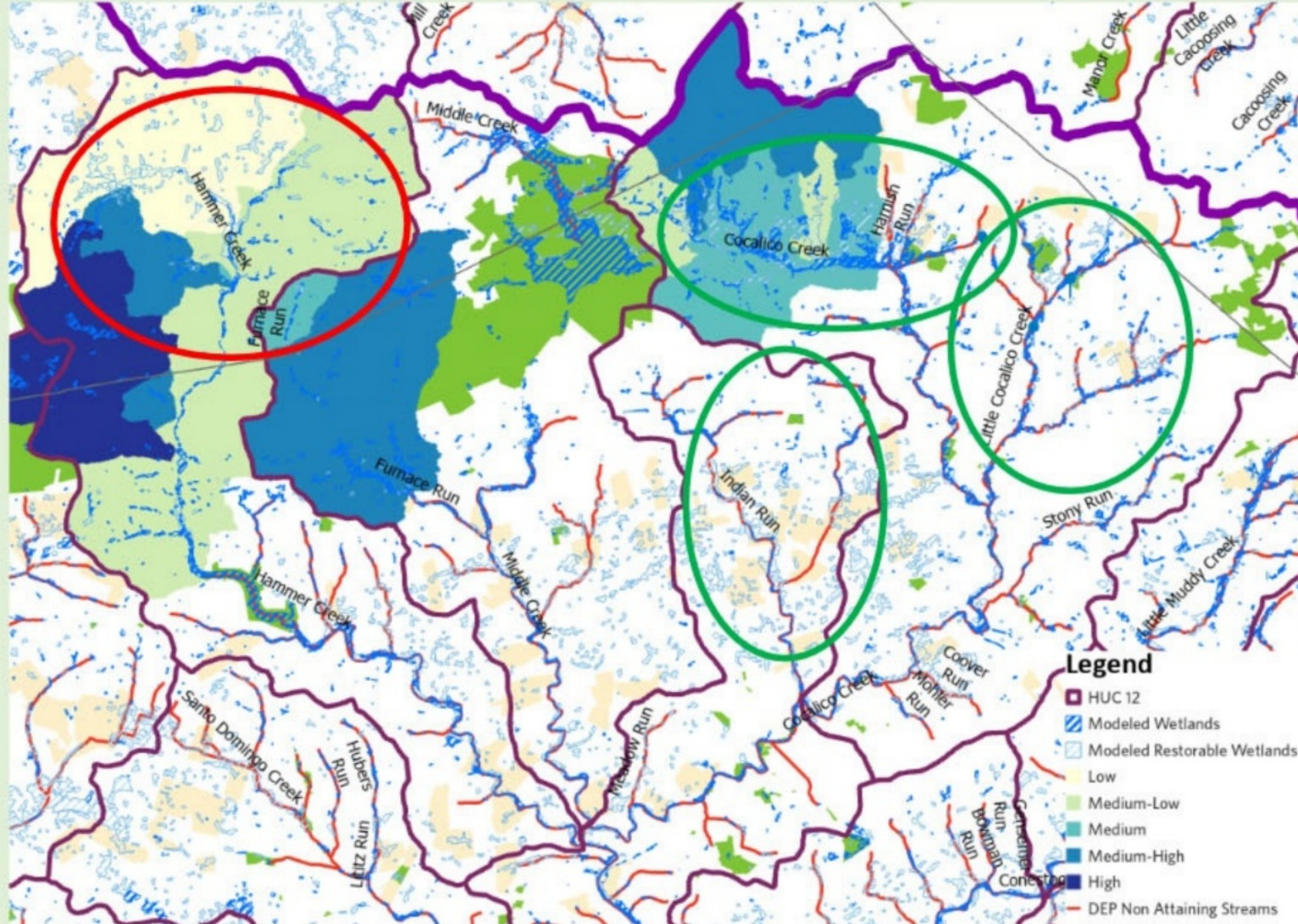


Photo credit: LandStudies

Tiered approach with 2 partnerships launched in mid 2022

SE Lebanon and Northern Lancaster County

Partnership 1



Cocalico Creek Watershed

Partnership 2



CONSERVATION GOALS

The primary goal is to address nutrient and siltation impairments both in-field and at the edge-of-field.

Accelerate the implementation of wetland and stream restoration in Upper Cocalico Creek which will have the greatest benefits to water quality, climate resiliency, habitat, and stream and floodplain functionality.

STRATEGIES

We don't focus on any specific land-use or landowner "types."

Instead, our efforts will focus on encouraging landowners to sign up for funded restoration programs and to pursue grant funding for projects.

We ultimately commit to following the landowner's lead and interest.

Rather than explicitly pushing a particular program, we will strive to find the restoration program /grant opportunity that best matches the land and landowner's preferences that also has highest ecological lift.

Current status of landowner outreach efforts

	<i>Landowners Contacted</i>	<i>Landowners Engaged in Conservation Conversations</i>	<i>Signed Landowner agreements to Explore Restoration</i>	<i>TOTAL Potential Stream Restoration (feet)</i>	<i>TOTAL Potential Wetland Restoration (acres)</i>	Pending landowner agreements to explore restoration	Pending agreements for Stream Restoration (feet)	Pending agreements for Wetland Restoration (acres)
Upper Cocalico creek partnership	256	126	55	36,946	131	6	5660	26
Upper hammer Creek partnership	27	20	7	19,000	43	0	0	0

Currently funded projects since mid 2023

- Funding Upper Cocalico Creek
 - Funding for design & permitting: with partners DEP GG (\$96,400)
Little Cocalico Creek at Fry's Run (2 landowners)
 - 1,300 linear feet of stream restoration and 5 acres of wetland creation
 - Several funded conceptual plans for landowners along a large reach. TNC, LCWP
- Funding Upper Hammer Creek
 - Funding for design, permitting & construction: Private, SRBC and CAP (Lebanon) (\$670,000)
 - 1,000 linear feet of stream restoration and 2.4 acres of wetland restoration
 - Funding for design, permitting & phase 1 construction: SRBC, NFWF SWG, ACAP (\$1.295M)
 - 4,825 linear feet of stream restoration and 11.3 acres of wetland restoration
 - Ag HUE, walkways, crossings
 - Funding for design & permitting: SRBC and NFWF (\$246,000)
 - 2,400 linear feet of stream restoration and 3.9 acres of wetland restoration

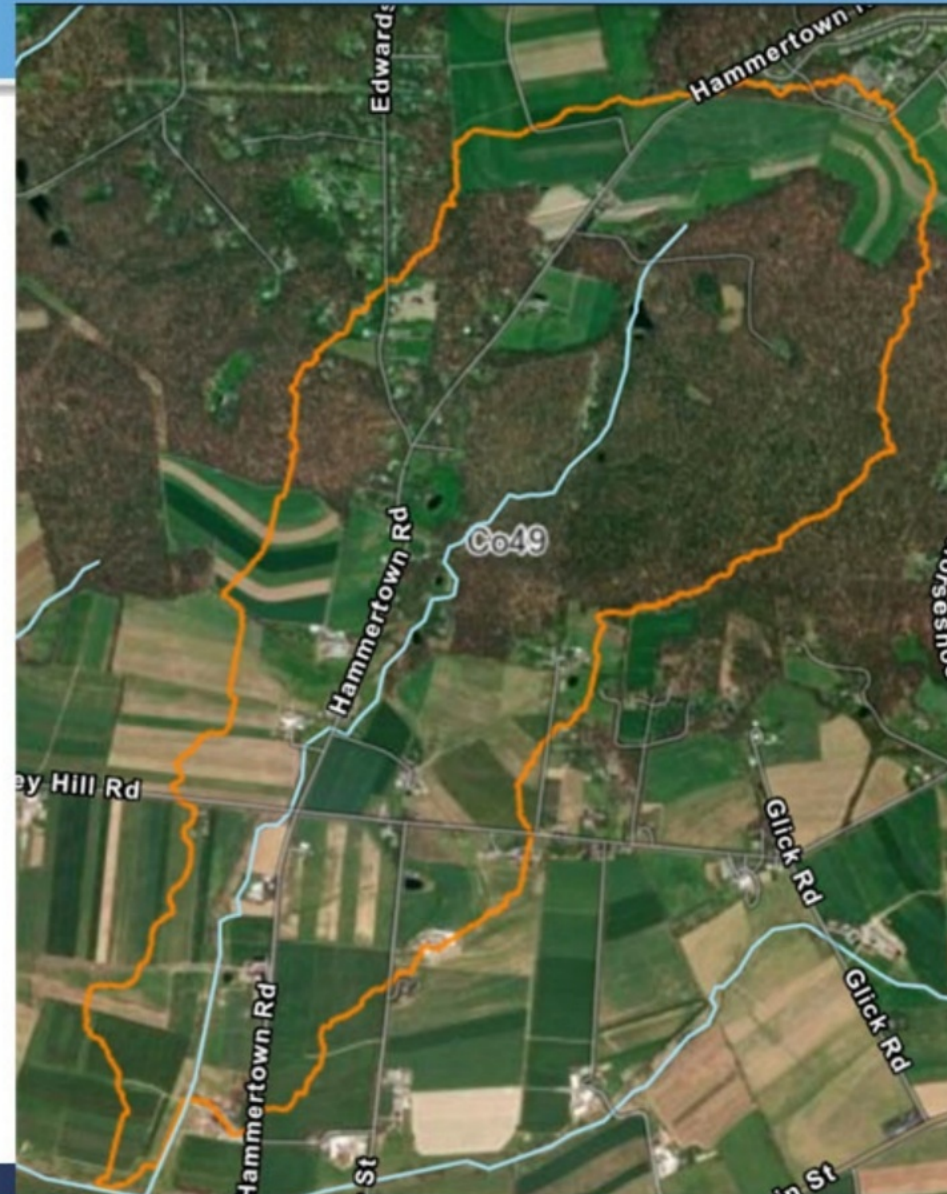
Delisting Strategy



HAMMERTOWN



HAMMERTOWN



**Hammertown
Run**

Winter 2014



Hammertown Run

Spring 2024

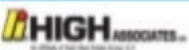




CEDAR CREEK



STAUFFER RUN



HOME ABOUT US FEATURES & PHOTOS RESIDENTS NEIGHBORHOOD APPLY OR PAY ONLINE CONTACT



AMENITIES

On-site management, Picturesque landscaping, Memberships to indoor & outdoor swimming pool & spa with grill and poolside Wi-Fi, Business-center, Pet friendly. Adjacent to walking paths and Tot Lot.

[VIEW](#)



HOMES

1, 2, and 3 Bedroom homes

[VIEW](#)



NEIGHBORHOOD

Located in East Lampeter Township, we're just minutes from Routes 30, 222, 283 and downtown Lancaster.

[VIEW](#)




Becky Marks, from the church: “Whenever I go to Lutheran Church of the Good Shepherd on Greenfield Rd in Lancaster-Greenfield Neighborhood, I purposely park behind our church so that I will “have” to walk past our rain garden. I love looking at all the native plants working together to improve habitat for the bees, birds, butterflies, and moths. I’ve stood in the pouring rain watching the rain garden fill up from the water being directed from our church roof, knowing that the water will be directed underground to be naturally purified and cleaned and eventually return to the Stauffer Run watershed as clean water. Before the rain garden, the stormwater from the roof was spilling out onto our asphalt parking lot picking up Pollutants which then went into the Stauffer Run. I feel like we are stewarding one little corner of our church property making our Earth just a little bit better. “



An aerial photograph showing a river flowing through a city. The river is a prominent light-colored feature, winding through the urban grid. The surrounding area is densely packed with buildings, streets, and some green spaces. The overall tone is somewhat muted, with a mix of greys, blues, and greens.

River Connections

A woman with dark, curly hair is standing in a studio. She is wearing a patterned top and a light-colored, textured cardigan. The background is a blue backdrop, and there are studio lights visible on the left and right sides. The lighting is soft and even.

The river is a part of my community.









Dr. Ruth Patrick

(1907 - 2013)

Dr. Ruth Patrick was an American aquatic biologist and educator widely regarded as one of the early pioneers of the science of limnology. She is best known for her work with diatoms (a type of algae encased in a glasslike shell) and her efforts in deploying multidisciplinary teams of researchers to assess and monitor aquatic ecosystems. (Britannica.com)

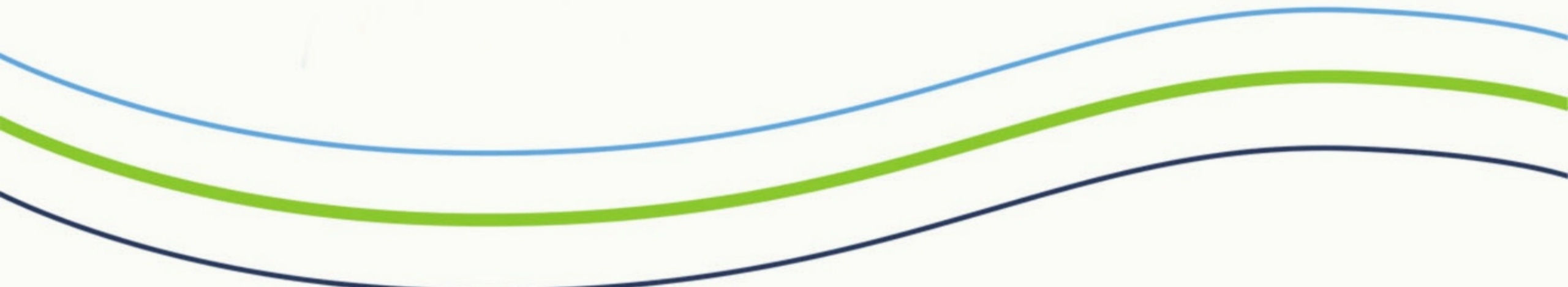






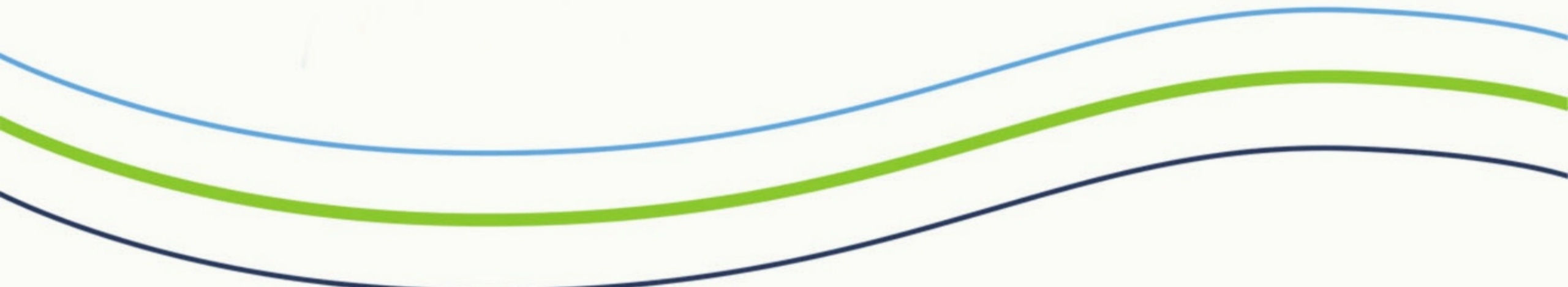


Thank You!





Action Steps & Networking



CELESTINE VALLER CONVERSATIONS

